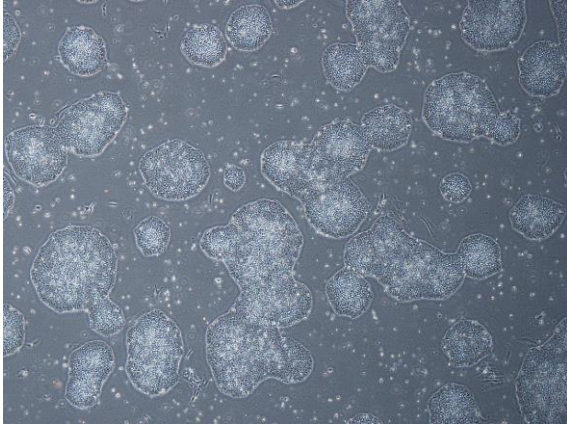
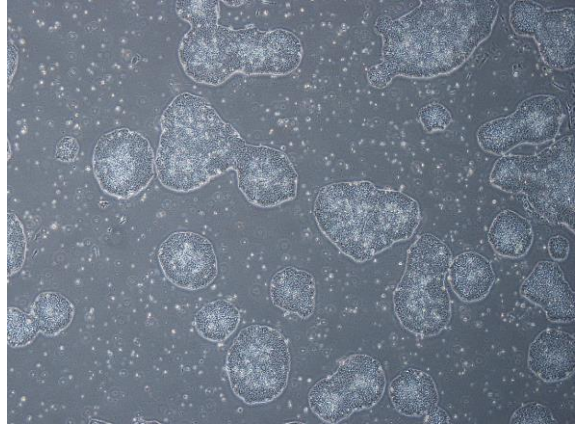


## 【 CiRA-j-1061 】 Morphology of iPSC colonies

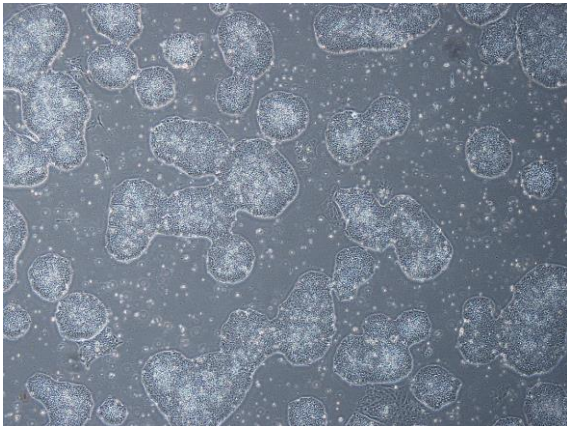
CiRA-j-1061-A: passage-2



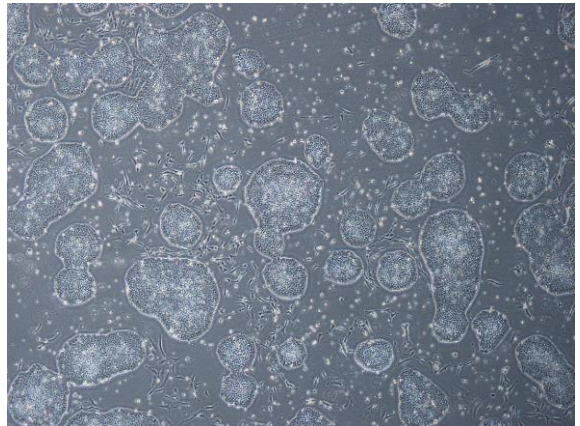
CiRA-j-1061-B: passage-2



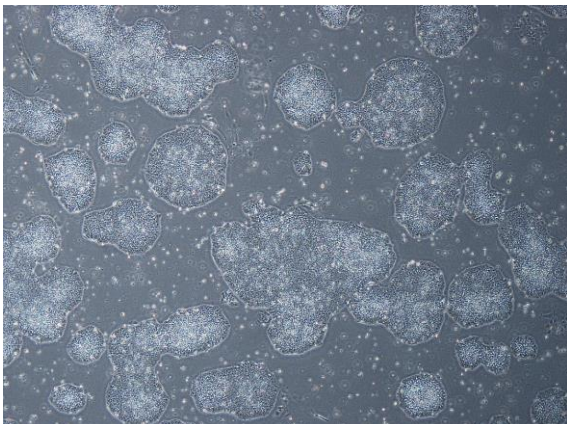
CiRA-j-1061-C: passage-2



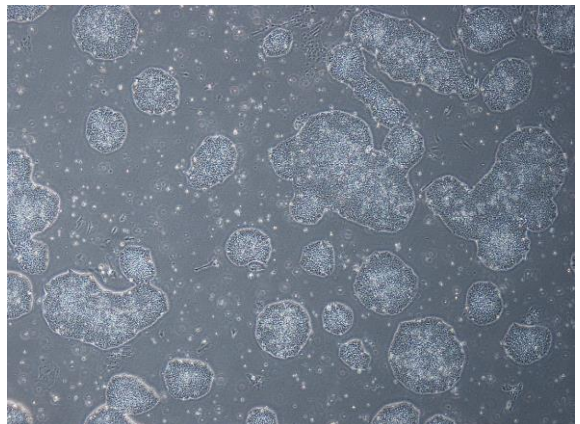
CiRA-j-1061-D: passage-2



CiRA-j-1061-E: passage-2



CiRA-j-1061-F: passage-2



( All images were captured at 4x magnification )